

8 - INFORMATION ON THE NATIONAL HIGHER EDUCATION SYSTEM

Structure and Degree System

The basic structure of the Turkish National Education System consists of stages of non-compulsory pre-school education; compulsory primary (elementary and middle school) and secondary (high school) education; and higher education. Primary education begins at the age of 5.5 (66 months), lasts eight years and comprises elementary and middle school education, four years each. Secondary education is also four years and divided into two categories as "General High School Education" and "Vocational and Technical High School Education". The entry into these categories is through composite scores obtained from a centralized exam for secondary schools.

Higher education system in Turkey is managed by the Council of Higher Education (CoHE, Yükseköğretim Kurulu-YÖK) which is an autonomous public body responsible for the planning, coordination, governance and supervision of higher education within the provisions set forth in the Constitution of the Turkish Republic and the Higher Education Law. Both state and non-profit foundation universities are founded by law and subjected to the Higher Education Law and to the regulations enacted in accordance with it.

Higher education in Turkey comprises all post-secondary higher education programmes, consisting of short, first, second, and third cycle degrees in terms of the terminology of the European Higher Education Area (EHEA). Undergraduate level of study consists of short cycle (associate's-önlisans derecesi) and first cycle (bachelor's-lisans derecesi) degrees which are awarded after successful completion of full-time two-year (120 ECTS) and four-year (240 ECTS) study programmes, respectively. The structure of first and second cycles is separate except for dentistry, pharmacy, medicine and veterinary programmes which are one-tier systems (lisans ve yüksek lisans bütünlük programları). The duration of these one-tier programmes is five years (300 ECTS) except for medicine which lasts six years (360 ECTS). The level of qualifications in these one-tier programmes is equivalent to that of second cycle including first cycle.

Graduate level of study consists of second cycle (master's-yüksek lisans derecesi) and third cycle (doctorate-doktora derecesi) degree programmes.

Second cycle degrees are divided into two sub-types named as master with thesis and master without thesis. The master programmes with thesis require 120 ECTS credits, which consist of courses, a seminar, and a thesis. Master programmes without thesis require 60 to 90 ECTS credits and consist of courses and a semester project. These programmes do not give direct access to third-cycle doctoral studies; for access to third-cycle programmes candidates should fulfil the thesis and other requirements of master programmes with thesis. 60 ECTS non-thesis master programmes are exceptional and exist in a few disciplines. Third cycle (doctorate with master degree) degree programmes are completed having earned 240 ECTS credits, which consist of completion of courses, a seminar, passing a scientific proficiency examination and a doctoral thesis. Third cycle (doctorate with bachelor degree) degree programmes are completed having earned 300 ECTS credits, which consist of completion of courses, a seminar, passing a scientific proficiency examination and a doctoral thesis. Proficiency in art, specialisation in medicine and in dentistry are accepted as equivalent to third cycle programmes, the last two being carried out within the faculties of medicine and dentistry, university hospitals and the training hospitals operated by the Ministry of Health.

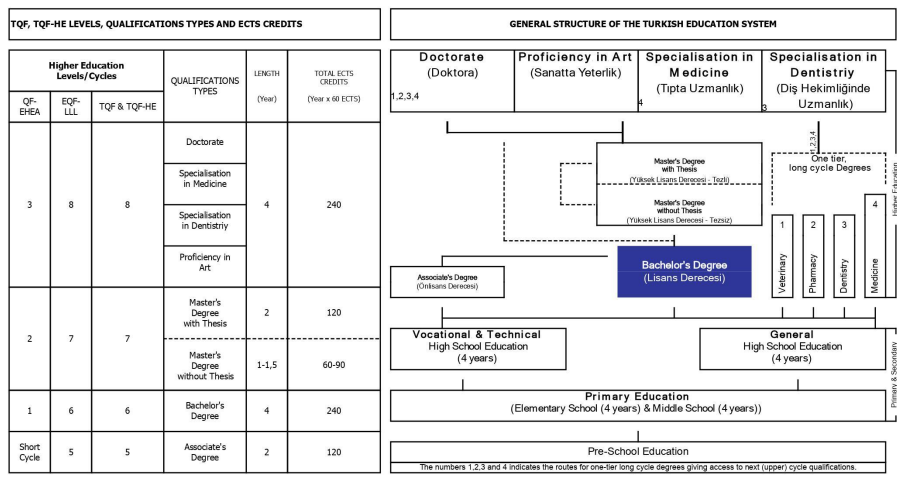
Universities consist of graduate schools (Institutes) offering second cycle and third cycle degree programmes, faculties offering first cycle programmes, four-year professional higher education schools offering first cycle degree programmes and two-year vocational schools offering short cycle degree programmes.

Admission requirements: Admission of national students to short and first cycle degree programmes is centralised and based on a nationwide one/two-stage examination(s) conducted by an autonomous public body (Assessment, Selection and Placement Centre-ÖSYM). Candidates gain access to institutions of higher education based on their composite scores consisting of the scores on the selection examination and their high school grade point averages. Admission to graduate programmes is directly conducted by the higher education institutions (HEIs) within the frameworks of the publicly available national and institutional regulations. Admission of international students to programmes at all levels of higher education can be done by direct applications of candidates to HEIs based on publicly available national and institutional regulations.

Turkish National Qualifications Frameworks: The National Qualifications Framework for Higher Education in Turkey (TQF-HE, TYYÇ in Turkish) developed with reference to the QF for European Higher Education Area and the EQF for lifelong learning was adopted by the CoHE in 2010. Later in 2015, the framework became a part of Turkish Qualifications Framework (TQF, TYÇ in Turkish) which was designed as a single framework in harmony with the European Qualifications Framework and displays all qualifications gained through vocational, general and academic programs including primary, secondary and higher education or other learning environments. The framework was referenced with the EQF in 2017.

TQF consists of 8 levels in which the higher education lies from 5 to 8. The levels of TQF and TQF-HE with reference to the European Overarching Qualifications Frameworks as well as that to ECTS credits and student workload are shown below.

Turkish Quality Assurance System: The Higher Education Quality Council of Turkey (THEQC) was founded as an autonomous public legal entity in 2015, and since then it has been operating at the national level for evaluating the quality levels of higher education institutions' education and research activities and administrative services at institutional level in accordance with the national and international quality standards, and coordinating the processes of institutional accreditation, internal and external quality assurance as well as authorization of independent external evaluation and accreditation organizations. THEQC is a full member of ENQA (The European Association for Quality Assurance in Higher Education) since April of 28, 2020.



GÜMÜŞHANE UNIVERSITY

DIPLOMA SUPPLEMENT



europass

Bağlarbaşı Mahallesi Gümüşhane/TÜRKİYE
Phone : +90 456 2337426 Fax : 90 456 2337427
Web : <http://www.gumushane.edu.tr>

Diploma No :
Diploma Date :

The purpose of the Diploma Supplement is to provide sufficient independent data to improve the international "transparency" and fair academic and professional recognition of qualifications (diplomas, degrees, certificates, etc.). It is designed to provide a description of the nature, level, context, content and status of the studies that were pursued and successfully completed by the individual named on the original qualification to which this supplement is appended. It is free from any value judgements, equivalence statements or suggestions about recognition. This Diploma Supplement model was developed by European Commission, Council of Europe and UNESCO.

1 - INFORMATION IDENTIFYING THE HOLDER OF THE QUALIFICATION

1.1. Last name(s) :
1.2. First name(s) :
1.3. Date of birth (day/month/year) :
1.4. Student identification number or code (if available) :

2 - INFORMATION IDENTIFYING THE QUALIFICATION

2.1. Name of the qualification and (if applicable) title conferred: İŞLETME (İÖ), Lisans Derecesi
2.2. Main field(s) of study for the qualification: BUSINESS (SECOND EDUCATION)
2.3. Name and status of awarding institution: Gümüşhane Üniversitesi, Devlet Üniversitesi Gümüşhane University, a State University
2.4. Name and status of institution (if different from 2.3) administering studies: Same as 2.3
2.5. Language(s) of instruction/examination: Turkish

3 - INFORMATION ON THE LEVEL AND DURATION OF THE QUALIFICATION

3.1. Level of qualification: First Cycle (Bachelor's) Degree
3.2. Official duration of programme in credits and/or years: 4 years (240 ECTS), 8 Semesters, 16-18 weeks per semester
3.3. Access requirement(s):
For Turkish Citizens:
(1) High School Diploma, (2) Placement through a centralised, nation-wide student selection and placement examination organized by Assessment, Selection and Placement Centre (ÖSYM). Candidates gain access to the programmes based on their composite scores consisting of the scores on the centralized exam and high school grade point averages.

4 - INFORMATION ON THE PROGRAMME COMPLETED AND THE RESULTS OBTAINED

4.1. Mode of Study : Full-time

4.2. Programme learning outcomes:

Key Learning Programme Outcomes:

- Learns fundamental business concepts, theories, issues and actors.
- Applies empirical analyzing to solve business problems.
- Analyses business literature.
- Collects, examines, and analyses the economic data about business.
- Develops oral and written skills.
- Has knowledge about current business problems and develops solutions.
- Develops lifelong learning behavior.
- Understand professional and ethical responsibilities.
- Works in disciplinary and interdisciplinary team environment.
- Learns the economic implications of business policies.
- Learns the ability to predict behavior of business and economic actors.

Graduation Requirements: A student is required to have a minimum CGPA of 2.00/4.00 and no falling grades.

4.3. Programme details and individual credits gained, and grades/marks obtained:

Course Code	Course Title	Course Category	Institutional Credits	ECTS Credits	Grade
Semester 1					
ATB191	Ataturk's Principles and Revolution History-I	C	2	2	CB
ISL 103	Business Mathematics-I	C	3	6	CC
ISL 107	Philosophy of Sciences	C	3	4	BB
ISL 111	General Business-I	C	3	4	CB
ISL 113	Financial Accounting-I	C	3	5	CC
SKY 101	Introduction to Law	C	3	4	BB
TDB 101	Turkish Language-I	C	2	2	CC
YDB 115	English-I	C	3	3	CC
Semester 2					
ATB192	Ataturk's Principles and Revolution History-II	C	2	2	CC
IKT 102	Introduction to Economics	C	3	4	CC
ISL 102	Behavioural Sciences	C	3	4	CC
ISL 104	Business Mathematics-II	C	3	6	CB
ISL 110	General Business-II	C	3	5	CB
ISL 112	Financial Accounting-II	C	3	5	CC
TDB 102	Turkish Language-II	C	2	2	CC
YDB 116	English-II	C	2	2	CC
Semester 3					
IKT 201	Microeconomics	C	3	5	CC
ISL 203	Statistics-I	C	3	4	CC
ISL 205	Principles of Management	C	3	4	CC
ISL 207	Principles of Marketing	C	3	4	CC
ISLSEC205	Research Methods	E	2	4	CC
ISLSEC207	Consumer Behaviour	E	2	4	CC
MLY 201	Tax Law	C	3	5	CC
Semester 4					
IKT 202	Macroeconomics	C	3	5	CC
ISL 204	Statistics-II	C	3	4	CC
ISL 206	Organization Theory	C	3	4	CB
ISL 208	Marketing Management	C	3	4	CC
ISL 212	Law of Obligations	C	3	5	DC
ISLSEC208	Current Managerial Techniques	E	2	4	BB
ISLSEC210	Business Relations and Presentation Techniques	E	2	4	AA
Semester 5					
ISL 301	Financial Management-I	C	3	4	CC
ISL 307	Production Management-I	C	3	4	CC
ISL 309	Operations Research-I	C	3	5	CB
ISL 311	Cost Accounting-I	C	3	5	CC
ISLSEC321	Labor Law	E	2	4	BB
ISLSEC323	Sales Management	E	2	4	CC
ISLSEC337	Computer Applications in Business	E	2	4	CC
Semester 6					
ISL 302	Financial Management-II	C	3	4	CC
ISL 308	Production Management-II	C	3	4	CC
ISL 310	Operations Research-II	C	3	5	CC
ISL 312	Cost Accounting-II	C	3	5	CB
ISLSEC302	Service Marketing	E	2	4	CC
ISLSEC304	Capital Markets Analysis	E	2	4	BB
ISLSEC328	Spreadsheet Modelling	E	2	4	AA
Semester 7					
ISL 401	Financial Statement Analysis	C	3	5	CC
ISL 403	Human Research Management	C	3	5	CC
ISL 407	Logistics Management	C	3	4	CC
ISL 408	Strategic Management	C	2	4	CC
ISL 409	International Marketing	C	3	4	CC
ISLSEC413	New Financial Instruments	E	2	4	CB
USD 403	Gender and Values Education	E	2	4	CC
Semester 8					
ISL 402	Auditing	C	3	5	BB
ISL 406	Investment Project Analysis	C	3	4	CC
ISLSEC406	International Finance	E	3	5	CB
ISLSEC418	Marketing Research	E	2	4	CC
ISLSEC422	Product Planning and Control	E	2	4	CC
ISLSEC428	Industry 4.0	E	2	4	AA
TEZ 400	Graduation Thesis	C	2	4	AA

Total Credits Obtained: 152(Institutional),240 ECTS

Cumulative Grade Point Average (CGPA) : 2,28 out of 4.00

C : Compulsory ; E : Elective

4.4. Grading system and (if available) grade distribution table:

A student's academic success is calculated by the Registrar's Office by taking into consideration the semester final grade(which is the sum of 40% of mid-term exam score and 60% of the final exam score) and cumulative grade point average (CGPA), and this grade is recorded in the student's personel file. For each course taken,the student is assigned one of the following grades by the course teacher The letter grades below are given in all faculties.

Letter Grade	Scores	Credits	Definitions	ECTS Grades	Calculation of Grades
AA	81-100	4.0	Excellent	A	
BA	76-80	3.5	Very Good	B	First 12%
BB	70-75	3.0			Next 20%
CB	60-69	2.5	Good	C	Next 23%
CC	50-59	2.0	Satisfactory	D	Next 35%
DC	45-49	1.5	sufficient	E	Next 10%
DD	40-44	1.0	Fail	FX	
FD	30-39	0.5		F	
FF	<30	0.0			
D	Non-attendance		K	Unsatisfactory	
G	Satisfactory completion		S	Still in progress	
M	Exempt				

For associate and B.Sc or B.A degrees,students must obtain at least DC or S from each course have a CGPA of not less than 2.00 out of 4.00, and have successfully completed all the courses and summer practices in the programme.Students who obtain a CGPA of 3.00-3.49 at the end of a semester are considered Honor Students and those who get a CGPA of 3.50-4.00 High Honor Students,and this is recorded in their academic report.

For M.Sc. or M.A degrees, students must obtain at least CC or S from each course and their calculated CGPA mustn't be less than 2.00 out of 4.00 For Ph.D degrees,the minimum letter grade for each course and CGPA must be BB or S and 3.00 out of 4.00 respectively Students of these graduate programmes must complete courses with a total local credit of at least 21, and prepare and successfully defend a thesis to fulfil all the requirements.

4.5. Overall Classification of the qualification:

Genel Not Ortalaması: 2,28 / 4.00 Başarılı

Cumulative Grade Point Average (CGPA): 2,28 / 4.00 Successful

5 - INFORMATION ON THE FUNCTION OF THE QUALIFICATION

5.1. Access to further study : Upon successful completion of this programme, students may apply to second cycle degree or directly to integrated third cycle (doctorate) programmes.

5.2. Access to regulated profession (if applicable): : This degree enables the graduate to exercise his/her profession in or a related field of the study.

6 - ADDITIONAL INFORMATION

6.1. Additional information :

6.2. Further information sources

University web site : www.gumushane.edu.tr
 University's ECTS Course Catalogue : <http://obs.gumushane.edu.tr/oibs/bologna>
 YÖK/COHE website : www.yok.gov.tr
 YÖKAK/THEQC website : <https://yokak.gov.tr>
 The Turkish Enic-Naric web site : <https://denklik.yok.gov.tr/enic-naric-tr-tanima-ofisi>
 TYÇ/TQF website : <https://www.myk.gov.tr/index.php/en/turkiye-yeterlilikler-cercevesi>
 TYÇ/TQF-HE website : <http://www.tyyc.yok.gov.tr>

7 - CERTIFICATION OF THE SUPPLEMENT

7.1 Date

7.4 Official stamp or seal

7.2 Name and Signature

7.3 Capacity



This document has been produced with a secure electronic signature.

Document Verification Address : <https://ebysorgu.gumushane.edu.tr/> Verification Code : [REDACTED]